

# SOUTH OF THE MOON

I KNEW THAT OL'  
NURSERY RHYME  
WAS A LOTTA  
BUNK!

GREG  
SPAGNOLA





# South of the Moon

South of the Moon #13 (S. 41) is a quarterly index of all known and generally available fannish amateur press associations. This is Vol. IV No. 1, August 1976 issue, produced by Andrew Sigel, 424 Greenleaf St., Evanston, IL 60202, including tons of information assembled and forwarded by former producer Tim C. Marion. SotM is available for current apa information, trades, locs, reviews and/or accepted artwork. Sample copies are \$.50, subscriptions 3/\$1. Copyright © 1976 by Andrew Sigel. Sundae City Press #18.

## Dedication

My first issue is dedicated to Tim C. Marion who took me seriously when I wrote him just under a year ago and asked him to turn this zine over to me if for any reason he wanted to stop publishing it.

## Table of Contents

Title.....	Cover & page 1	Introduction.....	page 1
Colophon.....	page 1	Information Wanted.....	page 2
Dedication.....	page 1	How to Use This Index.....	page 2
Table of Contents.....	page 1	Glossary of Terms.....	page 2
Art Credits.....	page 1	Miscellany.....	page 3
	The Index.....		page 4
	APA Frequency.....		page 4
	General APAs.....		page 4
	Local APAs.....		page 8
	Specialty APAs.....		page 10
Last Minute News.....	page 14	APA Appearances.....	page 15

## Art Credits

Front cover.....	Greg Spagnola	Page 3.....	Casey Cooke
Page 10.....	Andrew Sigel	Page 14.....	Russell Parkhurst

## Introduction

Although this issue of SotM is under a new editorship, I see no need to reiterate the past history of this zine as it was done only about a year ago. Larry Nielson, founder of this zine, has sent me an expanded version which I plan to use in the future if demand warrants. I will no longer be listing mundane apas as of this issue; information is sparse and it's not something I think the zine should be doing.

I think now is a good time to introduce myself. My name is Andrew Sigel. I am 21, 5' 8½" tall, have dark brown hair and brown eyes and wear glasses. I have been in fandom for just over 1½ years and am presently in RAPS and Apanage. I have just finished my Junior year at Windham College and I am majoring in Music with a minor in Mathematics. I was News Editor of the school paper and will be Student Government President this fall.

I plan to be using Tim's mailing list with a few of my own additions for this issue. Before next time, I will need to hear from you in at least one of the manners detailed in the colophon or some other manner arranged between us in order for you to continue receiving SotM. It is important that you all note that my address as of Sept. 5, 1976 will be SU Box 198, Windham College, Putney, VT 05346. Future CoAs will be announced as they

happen (probably about one per issue). Please note this so you can plan ahead where to send apa information, zines in trade, art, subscription money, or anything else.

## Information Wanted

For each apa, I would like to have the latest information for the following categories: 1) Name of apa, 2) What name stands for, 3) Frequency of Publication, 4) a. Local apa? If so, for what area? Who is willing to agent? b. Subject matter if not generally fannish, 5) Deadlines, 6) Dues, 7) Minac, 8) Copy requirement, 9) Membership limit, 10) Number of members, 11) Waitlist? If so: a. Fee for joining. b. Response required to stay on WL. c. Allowed to contribute? d. About how long on WL before a member? e. Other WL rules, 12) Name of founder, 13) Date founded, 14) OE (if not OE, state title and title meaning) name and address, 15) Mailing page count (range), 16) Subjects presently discussed, 17) Printing services, 18) Outside availability of mailings, and 19) Anything else appropriate. I will also try to send out a preliminary entry to each apa OE asking for corrections before each issue of SotM to eliminate unnecessary errors.

## How to Use This Index

For some of you, this may seem like a useless paragraph, but I have here some suggestions that I think make sense, and they won't kill you in any case. If you are interested in joining an apa, the best thing to do is contact the OE first. I advise against just sending dues and a zine right off the bat. You may even want to get a sample mailing to make absolutely sure before you join that an apa is "right" for you. Another consideration is the kind of output you can manage. Some people get into too many apas and they end up minacking in them all. The term for people who only minac is deadwood, because they are taking up space in the membership and contributing little (in most cases). There are people though who are in many apas and contribute several pages to each mailing, while some people can barely handle 1 or 2 apas. Just be sure you will have time to fulfill your apa commitments; it isn't fair to you or your fellow fen if you don't. If you will need the OE to do some printing you should definitely contact her or him to find out what and how much he or she can do for you. Although I am striving for accuracy, deadlines can be extended, dues can be raised, memberships can fill up and any number of other things can happen after I go to press or that I am simply not informed of. This index is designed to give enough information on an apa to help you decide which apa sounds like one you would enjoy joining, while telling what would be required of you if you did, as well as where you can find out more.

## Glossary of Terms

APA.....Amateur Press Association.  
 copy requirement....The number of copies of identical material that must be submitted to the OE for inclusion in the apa mailing.  
 minac.....minimum activity: The smallest amount of contributions you can make to an apa and not be dropped (kicked out).  
 mlg(s).....mailing(s).  
 p(p).....page(s).  
 CM.....Central Mailer (unless otherwise stated), or  
 OE.....Official Editor (unless otherwise stated): The person who receives all the contributions, collates them, and sends the resultant apa mlg to each member.  
 WL.....WaitingList: A list of people waiting to join an apa that has a full membership.  
 SASE.....Self Addressed Stamped Envelope.  
 loc.....letter of comment.

## Miscellany

A couple of policy statements before we get underway. I will generally only print entries for apas on which I have a decent amount of information. If I have a new entry, I will print it only once to try for information. If I cannot find any, or no one sends any to me I will not try again. Invitation-only apas will be listed with permission of the OE; secret apas will not be listed at all. Possibly sometime in the future this zine will print articles and somesuch that will naturally be about or deal with apas.

This issue (as you may have noticed) is offset. Future issues will be either mimeo or offset depending on my proximity to various printing facilities.

I have been informed by Lester Boutillier that George, the New Orleans-area apa, is dead.

Dan Goodman wrote to confirm that The Galactic Lens, a fiction-writing workshop, is dead. If he finds enough interest, he may revive it. His address is Box 645, Los Angeles, CA 90053.

Due to poor planning on my part, I did not start writing to the apa editors until about 3 weeks before my self-imposed deadline. Some editors were written as little as 1 week before deadline (that deadline was later extended 2 weeks). But I realized that there would be no possibility of reaching any foreign editors in time, although I wrote to every editor listed in the U. S. I expect to have complete listing for all foreign apas next issue. I am, however, dropping both AfricAPA and PAPS (PAPA?), as both editors received SotM 12 and neither have replied.

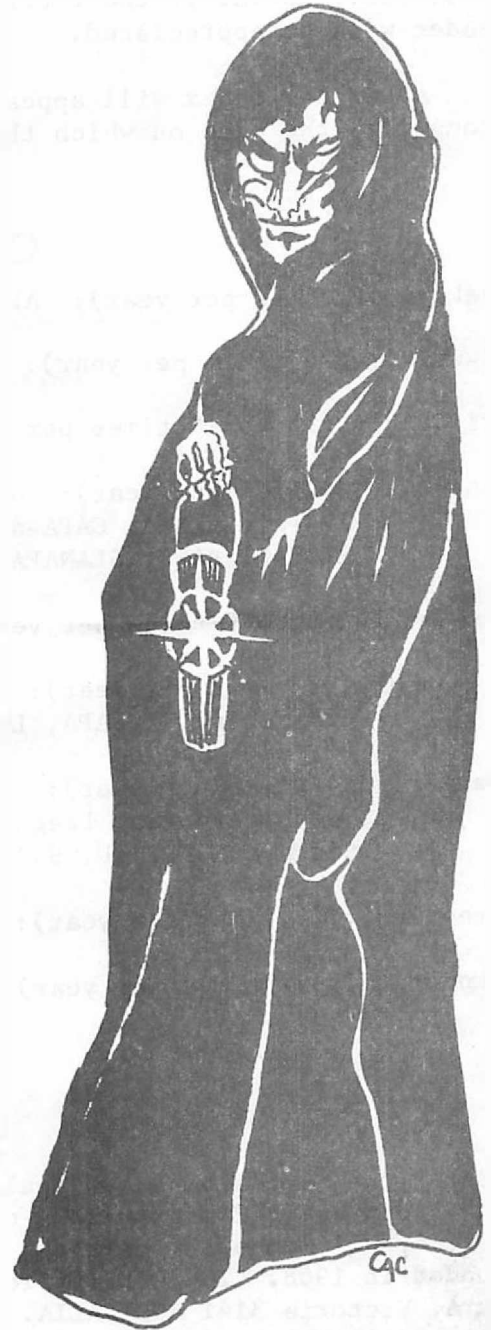
New apas this time are all of a specialized nature. They include two music-oriented apas (APA-LP, MUSAPA), a food, gardens and crafts apa (APPLE), a carbon-paper libertarian apa (CarbAPA), a hoax apa (Hapa, Ask Not), an apa devoted to the Legion of Super-Heroes (LEAPA), an H. P. Lovecraft apa (Necronomicon APA), an sf and occult apa (SF/O APA), and a women's apa (tentatively title A Women's Apa).

Denny Bowden tells me that MUSAPA is having a tough time getting off the ground. All those interested in a non-rock serious music apa are urged to write Denny. For more details see the MUSAPA entry.

If an apa has a star next to its name, that means my information is between 4 and 10 months old, and I don't have all the categories answered. I would greatly appreciate it if some of you could write and update this information. It may be unreliable, and the OE has not replied to my letter.

Anyone who wishes to review or plug this zine may do so. I would appreciate a copy of the zine it appears in, or at the very least, a copy of the text used.

And now...



# The Index

To facilitate finding the type of apa you want, I have divided the index proper into four sections. The first section is a new feature that lists the apas by the frequency they are published. The remaining sections will be the old index divided so that the general science fiction/fantasy fannish type apas appear in the second section, local apas appear in the third section and special subject apas (comics, weird fiction, creative apas, etc.) appear in the fourth section. Comments on how this format works for the reader will be appreciated.

After the index will appear an alphabetical list of every apa described in the index along with the page on which that apa can be found.

## APA Frequency

Weekly (52 times per year): APA-L.

Bi-weekly (26 times per year): APA-Q.

Tri-weekly (17 to 18 times per year): The Cult, Minneapa.

Monthly (12 times per year): Alarums and Excursions, APA-5, APA-H, APA-NESFA, APA-nu, APA-pi, AZAPA, CAPA-alpha, CarbAPA, D'APA, Elanor, Hapa, Ask Not, Malamrum, MISHAP, RAPS, SLANAPA, TAPS, Tetragrammaton Fragments.

Hexaweekly (8 to 9 times per year): APPLE, The Libertarian Connection, Myriad, PAAPA.

Bi-monthly (6 times per year): ANZAPA, APA-50, APALON, APA-LP, Apanage, Argos, Canadapa, Frefanzine, I-SAPA, LEAPA, N'APA, NYAPA, Phoenix, REHUPA, SDNY, SF/O APA, SFPA.

Quarterly (4 times per year): APA-45, CAPRA, D'APA-em, DraculAPA, E\*O\*D, FAPA, GUAPO, The Hyperborean League, MUSAPA, Necronomicon APA, OMPA, PHAPA, The Resuscitated Big APA, SAPS (U. S.), A Women's Apa.

Irregularly (? times per year): HerbAPA.

Unknown (also ? times per year): APAloosa, APA-nova, ROMPA, SAPS (Aus.), The Tholian Web, UNAPA.

## General APAs

ANZAPA\*(the Australia & New Zealand APA) is a bimonthly apa. Dues are \$3 and minac is 6pp every 2 mlg with a copy requirement of 40. The membership limit is 25, and there are 27 members (don't ask me how; that's what it says in my notes). This apa was founded in 1968. The OBE (Official Bloody Editor) is John Foyster, 6 Clownes St., S. Yarra, Victoria 3141 AUSTRALIA. The OBE will generally send a sample mlg to persons interested in joining. (Peter Roberts)

APA-45 (the Amateur Press Association of 1945) is a 4 times yearly apa with deadlines determined by the OE. Dues are \$1 per year and minac is 6pp every 2 mlg with a copy requirement of 35. The membership limit is 25, and there are presently 8 members. The apa was founded by Richard D. Mann and Richie Banyo in 1964. The OE is Don D'Amassa, 19 Angell Dr., East Providence, RI 02914. Mlg are 75 to 100 pp. Subjects discussed include the imminent death of the apa, sex, SF, music, etc. Mimeo repro is available via arrangement with the OE. A sample mlg is \$1.50. There was a restriction, now repealed, that members had to be born on or after Jan. 1, 1945. (Don D'Amassa)

APA-50 (the Amateur Press Association of 1950) is a bi-monthly apa with deadlines on Feb. 1, Apr. 1, etc. Dues are \$2 per year and minac is 4pp every 2 mlg, with a copy requirement of 35. The membership limit is 24, and there can be no more than 4 members born before Jan. 1, 1950. There are presently 24 members. The apa was founded by Chris Sherman in 1974 based on an idea by Roger Sween. The OG (Official Gargoyle) is Cy Chauvin, 17829 Peters, Roseville, MI 48066. Subjects discussed include cons, rock & roll, filksongs and virginity. Make arrangements with the OG for printing. A sample mlg is \$.50. (Cy Chauvin)

Canadapa (the Canadian APA) is a bi-monthly apa with deadlines on Feb. 1, Apr. 1, etc. Dues are \$2 per year, and minac is 4pp every 2 mlg, with a copy requirement of 30. The membership limit is 25, and non-Canadians can join only if at least 60% of the membership is already Canadian. There are presently 12 members. This apa was founded by Vaughn Fraser on June 1, 1972. The CM is Lawrence Severs, 5712 Fleet Rd., Hampstead, Quebec H3X 1G7 CANADA. Mlg range from 53 to 363 pp, with an average of 140pp. Subjects presently discussed include TV, films, comics, and some Star Trek, poetry and rock & roll. The CM can furnish electro-stencilling and mimeo printing; check with him first. Sample mlg and back mlg are \$1@. (Karen Pearlston, Lawrence Severs)

The Cult is a tri-weekly apa with rotating editorship, and has a minac of 1 contribution every 2 mlg. The membership limit is 13, and 5 Contributing Wlrs. The members must take turns being FR (Fantasy Rotator) editor, and must not only edit the mlg, but publish it as well. The membership and Contributing WL are both filled, and there are presently 7 other Wlrs. There is no fee for joining the WL. The apa was founded by Peter Vorzimer on August 29, 1954. The OA (Official Arbiter) is Charles Crayne, 734 South Ardmore, Los Angeles, CA 90005. Mlg range from 2 to 40 pp. Subjects include fire-fighting in free-fall, D&D, politics, and The Cult's own rules. Sample copies depend on the individual FR editor, who generally prints 18 to 40 copies of a FR. (George Scithers)

Elanor (named after the Lothlorien flower in THE LORD OF THE RINGS) is a monthly apa with deadlines on the the first of each month. Dues are \$1 as needed and minac is 2pp every 4 mlg with a copy requirement of 40. There is no membership limit and there are 27 members. This apa was founded by Larry Nielson in August 1974. The CM is Paul S. Ritz, 210 Liberty, Bowling Green, OH 43402. Mlg range from 29 to 88 pp, usually around 40pp. This is basically a fantasy-oriented apa. The CM offers ditto, mimeo, offset, xerox and thermofaxing. Check with him for details. The CM will generally send a sample mlg to persons interested in joining. This apa was originally started for members of the Mythopoeic Society; no connection now required. (Paul S. Ritz)

FAPA\*(the Fantasy APA) is the oldest fannish apa. It is quarterly, with deadlines on the second Saturday of Feb., May, etc. Dues are \$4 per year and minac is 8pp every 4 mlg, with a copy requirement of 68. The membership limit is 65, and to join, you must present proof of your existence in fandom, i.e., a fanzine you have published, or articles you have had published in fanzines from at least two different metropolitan areas. There are 65 members and 26 Wlrs. It costs \$1 to join the WL, and you must respond to at least every other issue of the official organ to remain on the WL. Money should be sent to treasurer Bill Evans, 14100 Canterbury Lane, Rockville, MD 20853. This apa was founded by Donald A. Wollheim in July 1937. The OE is Elmer Perdue; I have not been given his address. (Harry Warner Jr.)

I-SAPA (the Inter-State Amateur Press Alliance) is a bi-monthly apa with deadlines on Feb. 10, Apr. 10, etc. Dues are \$1 and a \$1 initial entry fee, plus assessments if needed. Minac is 4pp every 2 mlg with a copy requirement of 30. The membership limit is 25, and if you are not an established fan according to the I-SAPA constitution, the membership must approve your introductory zine. There are presently 25 members and 2 Wlrs. The WL fee is \$1. Wlrs can contribute. This apa was founded by Gino Membrino, Greg Swan, Pat Brooks and Scott Paauw on August 10, 1975. The CM is Gino Membrino, 28 Morris St., Fitchburg, MA 01420. The last 3 mlg have ranged from 200 to 350 pp. The subject most often discussed is comics, but other topics include movies, TV, rock music, pulps, sf, occult, horror, etc. The CM offers free ditto, some free thermofaxing and free ditto



masters to I-SAPA members only. Extra mlg's are on a first come, first serve basis. If a non-member makes a guest contribution, that person will receive the full mlg. (Gino Membrino)

Malamrum\* ("Golden Sunrise") is a monthly apa with deadlines on the first of each month.

There are no dues, no minac and no membership limit. The copy requirement is 15 and there are 10 members. This apa was founded by Alexandra Kiceniuk in 1973. The OE is Joe Mersch, 2827 Reed Rd., Escondido, CA 92027. Contents include poems, stories, comments, articles, reviews, insanity, etc. The OE can do dittoing. Most of the members are members of the Orange Glen High School sf club. (Jim Carleton, Joe Mersch)

Myriad\* is a hexaweekly apa with deadlines to be determined by the OEs. Due are \$1 per year and minac is 4pp every 2 mlg's with a copy requirement of 35. The membership limit is full at 30. It costs \$1 to join the WL. The apa was founded by Stven Carlberg in 1968. The OEs are Cliff and Susan Biggers, 621 Olive St., Cedartown, GA 30125. Mlg's range from 200 to 250 pp. The OEs offer printing at \$.60 per page. Extra mlg's are \$1. (Cliff and Susan Biggers)

N'APA (the Neffer Amateur Press Alliance) is a bi-monthly apa of the National Fantasy Fan Federation (N3F) with deadlines falling on Feb. 10, Apr. 10, etc. Dues are \$1 assessed as needed and minac is 4pp every 2 mlg's with a copy requirement of 25. The membership limit is 40 and you must be a member of the N3F to join N'APA. To join the N3F, send \$3 for a one year membership to Janie Lamb, Rt. 1, Heiskell, TN 37754, payable to Janie. N'APA has 16 members. The OE is Frank Balazs, 19 High St., Croton-on-Hudson, NY 10520, or, when school resumes, 69 N. Allen St., Albany, NY 12203. Mlg's generally range from 40 to 80 pp, and the subject most often under discussion is the N3F. The OE can offer mimeo, with the addition of xerox during the school year; check with him first. The OE will generally send a sample mlg to persons interested in joining. (Frank Balazs)

NYAPA (the New York Amateur Press Alliance) is a bi-monthly apa with deadlines on Feb. 1, Apr. 1, etc. Dues are \$1 as needed, and minac is 4pp every 2 mlg's with a copy requirement of 25. The membership limit is 20, and there are 21 members. The apa was founded by Neal Pozner in August 1971. The CM (Constitutional Monarch) is Carl Gafford, 321 E. 22nd St., Apt 6U, New York, NY 10010. Mlg's range from 100 to 275 pp. Subjects include comi s, SF, fannishness including faan fiction, etc. The CM and Greg Swan (555 N. Miller St., Mesa, AZ 85203) will do ditto printing, and Chuck Spanier will do 7-hole mimeo. Write them for rates. The new CM will probably be Chuck Spanier, 52 Seneca St., Staten Island, NY 10310, according to the other CM candidate, Greg Swan. (Greg Swan)

OMPA\* (the Off-trails Magazine Publishers Association) is a quarterly European apa with deadlines on Jan. 5, Apr. 5, etc. Dues are \$2 per year with a copy requirement of 50. The membership limit is 45, and there are 6 or 7 members. The apa was founded by Ken Bulmer in 1952. The OE is Keith Walker, 2 Daisy Bank, Quarmore Rd., Lancaster, Lancs, ENGLAND. (Keith Walker)

RAPS (the R? Amateur Press Society) is a nearly monthly apa with deadlines set by the OE. Dues are \$1 assessed as needed for postage and minac is 1p every 2 mlg's with a copy requirement of 30. There is no membership limit and there are presently 22 members. The apa was founded by David Burton in 1970. The OE is Dave Romm, 17 Highland Ave., Middletown, NY 10940. Mailings range from 40 to 100 pp and recent subjects include discussing what the R in RAPS should stand for. The OE can offer ditto; contact him first. The OE will generally send a sample mlg to a person interested in joining. Starting with the Sept. mlg, the OE will be Cathy McGuire, 339 E. 6th St., New York, NY 10003. (Andrew Sigel)

The Resuscitated Big Apa\* is a new quarterly apa with deadlines on Feb. 1, May 1, etc. Dues are \$2 per year and minac is 4pp every mlg, with both copy requirement and membership limit set at 25. The apa was founded by Larry Carmody in Feb. 1976. The OE is Larry Carmody, 118 Lincoln Ave., Minneola, NY 11501. This apa is sercon in nature. (Larry Carmody)



ROMPA\*(the Rival Off-trails Magazine Publishers Association) has a minac of 6pp every 2 mlg. The founder and OE is Ian Maule, 6 Hillcroft Crescent, Ealing, London W5 ENGLAND. (Peter Roberts)

SAPS (the Spectator Amateur Press Society) is a quarterly apa with deadlines on Jan. 15, Apr. 15, etc. Dues are \$2 per year and minac is 6 original pages every 2 mlg with a copy requirement of 35. The membership limit is 30, and there are around 20 members. It costs \$1 to join the WL, and a Wler must send in a card or letter 15 days before each deadline to remain on the WL. Wlers can contribute by having their zines franked by an obliging member (or the obliging OE). A 6pp deposit allow a Wler to become an instant member, providing the Wler pays the remaining \$1 dues upon receipt of the mlg. This apa was founded in 1947. The OE is Meade Frierson III, 3705 Woodvale Rd., Birmingham, AL 35223. Mlg run approximately 300pp. Everything is discussed. There is no printing available. Extra mlg are available to members and Wlers only for \$1.50. Meade tells me that SAPS is presently holding a bettership drive for witty bon-vivants and assorted goodfen. (Meade Frierson III)

SFPA (the Southern Fandom Press Alliance) is a bi-monthly apa with deadlines at the end of Jan., Mar., etc. Dues are \$2 per year and minac is 4 original pages every 2 mlg with a copy requirement of 30. The membership is filled at 25, and there are 27 Wlers. There is a \$1 fee to join the WL. The top 5 Wlers have first chance at the extra mlg; unclaimed copies first come, first serve for remainder of WL only. Wlers can contribute. It now takes slightly over 2 years to ascend from the bottom of the WL to the membership. This apa was founded by Bob Jennings in Sept. 1961. The OE is Stven Carlberg, 4315 West Alabama #4, Houston, TX 77027. Mlg run from 500 to 600 pp. Everything is discussed, including movies, music, animation, Barks, funnybooks in general (that's what Stven called them!), Southern Fandom, Diplomacy, cons, faanish nonsense, and even sf. There is no printing available. (Stven Carlberg)

SLANAPA\*(the SLANdiferous APA) is a monthly apa with rotating editorship; deadlines are the 15th of each month. There are no dues, minac is 2pp every 3 mlg, and both the copy requirement and the membership limit are 18. Each member must take turns editing a mlg, and can do anything he/she wants with it, but mlg have to be sent first class. There are 13 members. This apa was founded by Bob Vardeman in early 1970. The OE is Bob Vardeman, Box 11352, Albuquerque, NM 87112. Subjects discussed include Steeleye Span, MH2, etc. Availability of mlg depends on the editor at the time. (Tim C. Marion)

TAPS\*(the Terrean Amateur Press Society) is a monthly apa with rotating editorship; deadlines falling on the 15th of each month. There are no dues, minac is 1p every 2 mlg with a copy requirement of 40. The membership limit is 12, and the members must take turns being editor, not only editing the mlg, but publishing it and mailing it out first class as well. There are 12 members and 4 active Wlers. The AM (Apa Manager) is Susan Palermo, 141-41 Union Tnpk., Apt. 3-N, Flushing, NY 11367. Subjects discussed include the PO, Goon Show, Monty Python, and The Tesser Effect. The AM will send sample mlg to persons interested in joining. (Jim Carleton, Kurt Erichsen)

Tetragrammaton Fragments is the monthly newsletter of the UFO (United Fanzine Organization) with deadlines around the 15th of each month. Dues are \$1 at a time. Minac is 1p, an IAHF or some other notice (such as a new issue of your UFO fanzine) every 2 mlg. The copy requirement is 35. You may do your own repro, or send your ditto masters to the Chairman, who does most of the repro for each TF. The membership limit is 15. Each member sends her/his established fanzine to all members and comments in the newsletter on the other members' zines. Your fanzine must be approved before you can join the UFO, and while you're a member your zine must carry the UFO symbol. If your zine fails to maintain the standards of the UFO, you will be expelled. There are 15 members. This apa was founded by Carl Gafford in 1971. The Chairman is Kurt Erichsen, 1508 W. Myrtle Ave., Coos Bay, OR 97420. Between Oct. 1, 1976 and June 1, 1977, his address will be 155 NW Kings Blvd. #N209, Corvallis, OR 97330. Mlg range from 20 to 35 pp, and subjects include official UFO business. (Kurt Erichsen)

## Local APAs

These apas have their mlg's collated at meetings in the local area, so if you want to join and don't live in the area or just can't get to meetings, you will have to get someone, called an 'agent', to grab a mlg for you at a meeting and send it to you. Unless otherwise stated, you should make arrangements with the OE or your agent about your dues (usually to cover postage costs). If no agent is listed, check with the OE. Although I mention minac, in many cases, local apas don't have a membership per se. In these cases, when I say the minac is 1 contribution every 2 mlg's (for example), I mean that if you contribute to a mlg of that apa, you are entitled to a copy of that mlg and the next mlg only. So, in effect, you must contribute at least once every 2 mlg's to receive each mlg. Many local apas, instead of calling their end product a mailing, call it a distribution (dist'y). For convenience, I will refer to it as a mlg.

APA-L (the apa of the LASFS (Los Angeles Science Fiction Society)) is a weekly LA-area apa with deadlines each Thursday night a LASFS meetings. Minac is 1p every 2 or 3 mlg's and the copy requirement is 80. There is no membership limit and there are presently about 65 members, and that number fluctuates quite a bit. This apa was founded by Bruce Pelz on October 25, 1964. The OC (Official Collator) is Mike Glycer, % LASFS, 11360 Ventura Blvd., Studio City, CA 91604. Mlg's are in the general vicinity of 100pp, and just about everything is discussed. The LASFS has a mimeo; they print a minimum of 100 impressions at \$.20 plus the cost of paper (\$2.50 per ream). Some members have dittos and will do ditto printing. A sample mlg is \$1. (Fred Patten)

APAloosa\* is a Boston-area apa. From what people keep telling me, there are a lot of people in this apa on my mailing list. I need information from one of you before next issue, or this listing won't appear next issue, and none of you will see the next issue to notice its absence. (Kurt Erichsen)

APA-NESFA (the APA of NESFA (the New England Science Fiction Association)) is a monthly apa with collations on a Sunday; coordinated with NESFA meetings. Mailed contributions must arrive by the Friday before that, the Wednesday for zines to be run off, and the Friday before that for zines needing electrostencilling. Minac is 1 contribution every 3 mlg's, and the copy requirement is 55. There is no membership limit, but you must be a member of NESFA. NESFA dues are \$6 per year. This apa was founded by Edwin W. Meyer Jr. and NESFA on June 28, 1970. The OC (Official Collator) is Mary Cole, % NESFA, PO Box G, M.I.T. Branch Station, Cambridge, MA 02139. Mlg's are generally somewhat over 100pp. Subjects vary widely and include NESFA. Ditto and mimeo printing and electrostencilling are available; write for rates. A sample mlg is \$.75. (Donald E. Eastlake III)

APA-nova\* is an Australian apa collated at Nova Mob meetings. This is another apa that will get the heave-ho unless I get something new. (Peter Roberts)

APA-nu (the APA of NYU (once called APA-NYU), nu stands for the Greek letter of similar sound) is a nearly monthly apa with deadlines determined by the UE. The apa is sponsored by the New York University Science Fiction Society (NYUSFS). There is no membership limit. This apa was founded by Samuel Edward Konkin III in Mar. 1974. The UE (Unofficial Editor) is Richard A. Friedman, and his address is either 2068 or 2069 Ocean Ave. (one was given by Sam, the other by Marc), Brooklyn, NY 11230. Mlg's range from 3 to 24 pp. Subjects discussed include books, movies, personal matters and lots of fannish nonsense. There is no printing available. There is ingroupishness: knowing someone helps. (Marc S. Glasser, Samuel Edward Konkin III)

APA-pi\* is a monthly Berkeley-area apa with deadlines on the first to third Saturday of each month, and at least 4 weeks apart. The copy requirement is 35. There is no membership limit, and there are 14 members. This apa was founded on October 1, 1971. The OEs are George and Andrea Mitchell, 1843 Capistrano Ave., Berkeley, CA 94704. The OEs can print 9-hole stencils at \$.32 for 2 sides; David Nee, 1434 Henry St., Apt. E, Berkeley, CA 94709 can ditto 2 sides for \$.35. (Larry Nielson)

Apa-Q (the second Fanoclast APA, started in Queens, NY) is a bi-monthly apa with deadlines every other Friday night before 12:00 at Fanoclast meetings. All known agents are unfortunately booked solid; you'll have to find and/or persuade a Fanoclast on your own. There is no minac. Anyone represented physically or by an agent at meetings can get a copy, as long as contributors get theirs first. The copy requirement is 50. There is no membership limit, and there are around 30 members. This apa was founded by Jerry Kaufman on August 2, 1974. There is no OE. Fanoclast meetings are held at the home of Lise Eisenberg, 99 Joralemon St., Apt. 6D, Brooklyn, NY 11201. Contributions can be mailed directly there. Mlgs average about 30pp and subjects are wide-ranging. There are many mimeos in the NY-area, and your agent can probably lead you to one that will run Gestetner, Geha or Rex. There is less available dittoing. A request for a sample mlg accompanied by sufficient postage will probably be answered. (Moshe Feder)

AZAPA (the Arizona APA) is a monthly apa with deadlines on the first Sunday of each month. Minac is 2pp every 2 mlgs and the copy requirement is 10 more than the number of members. The membership limit is 35 and the OE can reject material he considers libelous. There are 30 members. This apa was founded by Patrick Hayden on May 4, 1975. The OE is Bruce D. Arthurs, 920 N. 82nd St., Apt. H-201, Scottsdale, AZ 85257. Mlgs run about 150 to 180 pp. Subjects under discussion include anarchism, the military, libertarianism, conventioning, job hunting, etc. The OE can do printing at 3/4 ¢ 1 side, 1¢ 2 sides each sheet of paper for 4-hole stencils; ditto printing at a slightly higher cost. The OE will send 2 sample mlgs to persons who express an interest in joining. (Recently, some sample requests have included \$1. This is not required, but is greatly appreciated.) There is presently a proposal before the membership to start charging a \$1 membership fee, in addition to printing and postage costs. It is expected to pass. (Bruce D. Arthurs)

D'APA (the Denver APA) is a monthly apa with collating done at DASFA (Denver Area Science Fiction Association) meetings, which are held on the third Saturday of each month. Minac is 1 contribution every 2 mlgs and the copy requirement is 30. There is no membership limit, and there are 16 members. This apa was founded by Paul Angel in October 1972. The OE is Rose Beetem, 2200 Canyon Blvd #3, Boulder, CO 80302. Mlgs are about 25 to 30 pp. Subjects discussed include women's lib, effect of heredity vs. environment on intelligence, personal relationships, and sometimes even sf. The OE offers ditto, mimeo and offset. Contact her for cost and other details. The OE may send a sample mlg to persons interested in joining. (Doris Beetem)

GUAPO\*(the GUadalajara Amateur Press Organization) is supposed to be a new quarterly apa of Guadalajara, Mexico. The copy requirement is 25. The apa was or will be founded by Elst Weinstein in 1976. The OE is Elst Weinstein, APDO 6-869, Guadalajara 6, Jalisco MEXICO. The OE does not do printing. I have not heard from Elst, so I would advise not sending him anything unless you write first. (Elst Weinstein)

Minneapa (the Minneapolis APA) is a tri-weekly apa with deadlines determined by the OE. A possible agent is Denny Lien, 2408 Dupont Ave. So. #1, Minneapolis, MN 55405. Please enclose an SASE for reply. Minac is 1 contribution every 2 mlgs and the copy requirement is 50, subject to change as necessary. There is no membership limit, and there are 35-40 members. This apa was founded by Mike Wood in July 1972. The OE is Mike Wood, 1878 Roblyn Ave. #3, St. Paul, MN 55104. Mlgs run 100 to 130 pp. Everything and anything is discussed. There may be a local member willing to do some printing, but you'll have to find her/him yourself. A sample mlg is \$.50 plus postage. (Mike Wood)

MISHAP (the MICHigan Society of Amateur Publishers (the "H" is fannishly silent)) is a monthly regional apa with deadlines on the 2nd Sunday of each month. Dues are for postage; make arrangements with the OEs, who send all mlgs. Minac is 1 contribution every 2 mlgs, and the copy requirement is 60. There is no membership limit, and there are about 40 active contributors. This apa was founded by Cy Chauvin and Leah A. Zeldes in Jan. 1975. The OEs are Leah A. Zeldes and Diane Drutowski. Mail should be sent to Leah at 21961 Parklawn, Oak Park, MI 42837. Mlgs range from 125 to 150 pp. Subjects discussed include cons, movies, sex, Ohio, W3F, etc. The OEs do not offer printing. A sample mlg is available for postage. (Leah A. Zeldes)

SAPS\*(the Sydney Amateur Press Society) is a Sydney, Australia-area apa. The OE is Sue Clarke, 6 Bellvue Rd., Faulconbridge, NSW 2776 AUSTRALIA. I need more information! (Steve Beatty)

SDNY (named for S\*D\*N\*Y G\*L\*T\*Z, a former member of RAPS) is a bi-monthly apa with deadlines on Feb. 15, Apr. 15, etc. Dues are \$1 at a time, minac is 2pp every 2 mls and the copy requirement is 40. There is no membership limit. This apa was founded by John Robinson in Oct. 1975. The OE is John Robinson, 1-101st St., Troy, NY 12180. The OE can offer ditto at \$.25 for 1 side, \$.30 for 2 sides. The OE will generally send a sample mlg to persons interested in joining, and would like some people from the South, and west of the Mississippi to join. (John Robinson)

## Specialty APAs

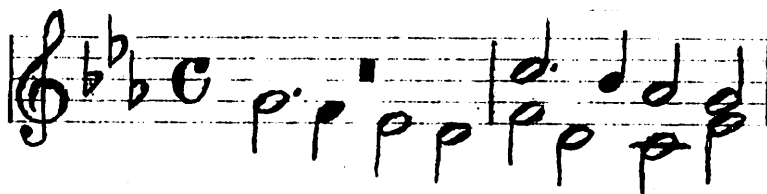
Alarums and Excursions is a monthly Dungeons & Dragons apa with deadlines usually on the first Wednesday of each month. The copy requirement is 150. There is an membership limit and there are around 30 contributors. This apa was founded by Lee Gold in July 1975. The OE is Lee Gold, 2471 Oak St., Santa Monica, CA 90405. Recent mls have been over 100pp. Subjects discussed include write-ups of D&D adventures, new characters and monsters, rule interpretations, humor, etc. The OE offers the following printing services: 9-hole stencils, \$.50@; pages to be typed on stencils, \$.75@ (the OE will edit); pre-printed pages, a credit of \$.20@. If you contribute 4pp or more, that mlg is free; 1-3 pp to that mlg or 4pp or more to the previous mlg, you pay postage only; 1-3 pp to the previous mlg, \$.35 plus postage; otherwise \$.75 plus postage. (Samuel Konkin, Lee Gold)

APA-5 (the fifth comics APA) is a monthly comic book apa with deadlines on the tenth of each month. Dues are \$1 until used up and minac is 6 original pages every 3 mls with a copy requirement of 40. The membership is presently full with 30 members and there are 5 WLers. The WL fee is \$1. WLers can contribute; if they do 2pp they can get the mlg for postage, if not, mls cost \$.75. When space on the membership becomes available, the first zine must be at least 6pp. The apa was founded by Mark Verheiden in the summer of 1971. The OE is Art Scott, 1089 Tanland Dr. #103, Palo Alto, CA 94303. Mls range from 175 to 225 pp, and subjects under discussion include drawing techniques, sad state of current comics, foreign comics, etc. The OE can print Rex stencils at \$.25 per page unless otherwise arranged. A sample mlg is \$1; back issues are \$.75, \$1 for annishes. (Art Scott)

APA-H (the APA of Hoaxes) is a monthly hoax apa with deadlines on the first of each month. Dues are \$1 at a time and minac is 1p every 2 mls, with a copy requirement of 35. There is no membership limit and there are 24 members. This apa was founded by Freff in 1970. The OE (Official Emperor) is Frealaf Thorolfson, % Steve Beatty, 1662 College Terrace Dr., Murray, KY 42071. After Sept. 1, the address will be 303 Welch #6, Ames, IA 50010. Mls range from 18 to 46 pp. Subjects include equal rights for mimeos, galactic postal service, putridity, homosexuality, sex life of Martians, etc. There is a faanfic round-robin, and the apa is distributing the newly minted Fan Currency. The OE can do mimeo printing at 12¢ for 1 side, 15¢ for 2 sides, and will generally send a sample mlg to persons interested in joining. (Steve Beatty)

APALON\*(named after the mythical isle of Avalon) is a new bi-monthly medieval legends apa with deadlines falling in Jan., Mar., etc.; dates determined by the OE. Dues are \$3 and minac is 4pp of sercon material every 2 mls. There are 10 members. The apa was founded by Jim Bodie in 1976. The OE for the first couple of mls is Jim Bodie, 4403 Victoria Blvd., Hampton, VA 23669. (Jim Bodie)

APA-LP (the discophile's APA) is a new bi-monthly apa dealing with recorded music of all species with deadlines falling on Feb. 15, Apr. 15, etc. Dues are \$2 per year and minac is 4pp every 2 mls or 12pp per year with a



copy requirement of 30. The membership limit is 25. All contributions must be music oriented and must be sent in unbound and uncollated. There are 11 members. This apa was founded on April 20, 1976 by Nicholas J. Polak and Patrick Hayden based on an idea by Brad Parks. The OE (Official Engineer) is Nicholas J. Polak, Box 1453, Middletown, NY 10940. The first mlg was 22pp, with Punque rock and many record reviews as some of the contents. 4-hole mimeo printing only at \$.35 per 2 sides with 2 weeks notice. Speculation copies are sent on editorial whim. (Nicholas J. Polak)

Apanage (a pun on the provisions for the younger sons of kings) is a bi-monthly juvenile fantasy apa with deadlines of Jan. 1, Mar. 1, etc. Dues are \$2 assessed as needed and minac is 2 preferably original pages every 2 mlgs with a copy requirement of 25. The membership is full with 20 members and there is 1 Wler. A person must pay \$2 to join the WL; it counts towards dues. Wlers may not contribute. The top 2 Wlers receive mlgs. This apa was founded by Michael Dobson in 1970. The OE is Joanne Burger, 55 Blue Bonnet Ct., Lake Jackson, TX 77566. Mlgs range from 125 to 175 pp, and topics being discussed include THE FORGOTTEN BEASTS OF ELD, THE THREE AND FOUR MUSKETEERS, Robin Hood, etc. The OE can do ditto; check with her first. You can generally get a sample mlg if you convince the OE you are interested in joining. This is an incredibly friendly apa. (Andrew Sigel)

APPLE (stands for good things) is a new hexaweekly food, gardens and crafts apa with deadlines determined by the OE. There are no dues or minac. The copy requirement is 75. There is no membership limit and a variable number of members. This apa was founded by Jon Singer and Sheila D'Amassa on Feb. 14, 1976 (at Boskone). The OE is Sheila D'Amassa, 19 Angell Dr., E. Providence, RI 02914. Mlgs run about 50pp. The OE does mimeo at \$.40 per page, and dittoing is available. Check with her for details. A sample mlg is \$.50. (Sheila D'Amassa)

Argos\* is a bi-monthly creative apa with deadlines on the last Friday of Jan., Mar., etc. There are no dues, and minac is 4pp every 2 mlgs with a copy requirement of 50. The membership limit is 30, and there are 19 members. The apa was founded by John Merkel and Dierdre Matthews in Jan. 1974. The CM is John Merkel, PO Box 853, Kalamazoo, MI 49005. The CM can print ditto masters. Mlgs cost \$1.50 to outsiders. (John Merkel)

CAPA-alpha (the first Comics APA) is a monthly comic book apa with deadlines falling on the first of each month. Dues are \$2 until used up. Minac is 4pp every 3 mlgs and the copy requirement is 50. The membership limit is 40. To join, a prospective member must state that the apa's constitution is understood. There are 39 members and 10 Wlers. It costs \$1 to join the WL, and a Wler must respond to each CM's Comments to remain on the WL. Wlers may frank through zines and receive from 1 to 3 sample mlgs. The apa was founded by Jerry Bails in 1964. The CM is Jeff Wasserman, 2108 E. 65th St., Brooklyn, NY 11234. The average mlg has 210pp. Bob Zimmerman, 649 E. 32nd St., Brooklyn, NY 11210 can print 7-hole Rex Rotary stencils at \$.75 per 2 stencils; he must be given advance notice. Mlgs are available only to members and Wlers. (Jeff Wasserman)

CAPRA (the Cinema Amateur PResS Association, also named after director Frank Capra) is a quarterly film apa with deadlines in Jan., Apr., etc.; dates determined by the OE. Dues are \$2 per year and minac is 1p every other mlg, with franking and postmailing encouraged. The copy requirement is presently 30, but the OE specifies it for each mlg. The membership limit is 25. A member must be interested in writing about films. The membership presently stands at 21 and there is considerable fluctuation. It costs \$2 to join the WL, and that money goes for the first years dues when a membership spot opens. CAPRA was founded by Lesleigh Luttrell in early 1974. The OE is Jerry Kaufman, 880 W. 181st St. #4D, New York, NY 10033. The mlgs range from 40 to 100 pp. The OE can run off Gestetner 9-hole and ABDick 4-hole stencils and ditto. Check with him first. Copies of the current mlg are available to any interested persons for \$.50. (Jerry Kaufman)

CarbAPA (the Carbon APA) is a new monthly libertarian apa with deadlines on the 2nd Thursday of each month. Dues are an SASE with \$.24 on it for each mlg. The copy requirement is 20, and it must be on paper that is as light or lighter than 13 printed sides per ounce. If you use heavier paper, your contribution will be included only if it does not increase the postage for that mlg. If it does, it will be held until a mlg comes

along with available space. There is no membership limit, and there are presently 4 members. The OE and founder is Erwin S. Strauss, 9099 Goodluck Road, T2, Lanham, MD 20801, and the apa was founded on April 29, 1976. The first few mlg's have ranged from 5 to 15 pp, and libertarianism was the major topic. The first sample mlg is a \$.24 SASE, succeeding mlg's are \$.25 plus a \$.24 SASE. The philosophy in THE MOON IS A HARSH MISTRESS by Heinlein is one kind of libertarianism; there are many. (Erwin S. Strauss)

D'APA-em (elementary, my Dear APA) is a quarterly mystery apa with deadlines in Mar., June, etc.; dates appointed by the OE. Dues are \$2 per year and minac is 6pp every 2 mlg's with a copy requirement of 35. The membership limit is 35, and there are 16 members. This apa was founded by Donna Balopole in December 1973. The OE is Donna Balopole, 80-27 254th St., Floral Park, NY 11004. Subjects are mystery and detective fiction. The OE can do mimeo printing; check with her first. A sample mlg is \$1. The apa is presently considering going bi-monthly, and OE elections are also in the near future. (Donna Balopole)

DraculAPA\*(named for Dracula) is a new quarterly supernatural horror apa with deadlines of Mar. 13, June 1, Sept. 7 and Dec. 12. Dues are \$2 and minac is 4pp every 2 mlg's with a copy requirement of 30. The membership limit is 25. The apa was founded by Crispin Burnham in 1976. The OE is Crispin Burnham, 1051 Wellington Rd., Lawrence, KS 66044. (Crispin Burnham)

E\*O\*D \*(the Esoteric Order of Dagon) is a quarterly H. P. Lovecraft/weird fiction apa with deadlines of Feb. 5, May, 1, Aug. 1 and Oct. 31 (Candlemas, Roodmas, Lammas and Hallowmass). Dues are \$2 per year and minac is 6 non-prior distributed pages every 2 mlg's with a copy requirement of 50. The membership is full at 39 (thrice 13) and there is a WL. Wl's can contribute and can also buy extra mlg's for \$1. The apa was founded by Roger Bryant in 1973, based on an idea by Joe Pumila. The OE is Joe Moudry, PO Box 1205, Tuscaloosa, AL 35401. Subjects discussed include REH, CAS, HPL, etc. Sample mlg's are not available. (Roger Bryant)

Frefanzine (from "frefan": fannish contraction from DUNE of freedom fan, means libertarian sf fan) is a bi-monthly libertarian sf apa with deadlines in the last week of Feb., Apr., etc. The copy requirement is 200. There is no membership limit, but members should be fannish and at least interested in libertarianism. This apa was founded by Samuel Edward Konkin III in Aug. 1975. The OE is Ken Gregg, PO Box 2790, Long Beach, CA 90801. Mlg's range from 16 to 24 pp. Subjects discussed include sf reviews, pro views, fan views of libertarianism, films, philosophy, economics, history and fannish nonsense. The OE might run 9-hole stencils; check with him first. (Samuel Konkin, Steve Beatty)

Hapa, Ask Not (a take off of "Hoka, Ask Not") is a monthly hoax apa with deadlines on the Friday closest to the 20th of each month. There are no dues and minac is 2pp every 2 mlg's. The copy requirement is 50, but will be 100 for the Aug. 20th issue in order to have many copies for Mid AmeriCon. There is no membership limit, and there are 12 members. This apa was founded by Barbara Geraud and Laurie Trask in Mar. 1976. The OE is Barbara Geraud, 1202 Benedum-Trees Bldg., Pittsburgh, PA 15222. Mlg's are 10 to 20 pp. Subjects include various hoaxes. The OE does printing at \$.40 per page, plus \$.25 if she has to type the stencil. A sample mlg is \$.50. Note: This apa was started, not realizing APA-H was still alive. The last mlg had a spontaneously porny tone, and the apa is now toying with becoming strictly porn. (Steve Beatty, Barbara Geraud)

HerbAPA\*(the Herbangelist APA) is an irregularly published apa devoted to the comic strip "Herbie". Dues are \$.50 per mlg for members. There is no membership limit. This apa was founded by Elst Weinstein in 1973. The OE is Elst Weinstein, APDO 6-869, Guadalupe 6, Jalisco MEXICO. Mlg's are \$1.50 to non-members. The latest mlg (#3) is over a year late, and some people are wondering if it will ever be out. (Elst Weinstein)

The Hyperborean League (from CAS's Hyperborea tales and REH's Hyborian Age) is a quarterly Robert E. Howard/Clark Ashton Smith apa with deadlines of Jan. 18, Apr. 1, July 1 and Oct. 1. Dues are \$2 per year and minac is 15pp per year dealing with REH, CAS or related writers. The copy requirement is 40 unstapled zines. The membership

limit is 30 and there are 29 members and 2 Wlers. This apa was founded by Don Herron on October 15, 1975. The OE is Don Herron, 340 Summit Ave., St. Paul, MN 55102. Mlgs run from 125 to 200pp. There is no printing available. Extra mlgs are for members and Wlers only. (Don Herron)

LEAPA (the LEgion APA) is a new bi-monthly Legion of Super-Heroes apa with deadlines in Feb., Apr., etc.; dates determined by the Leader. Dues are \$1 at a time for postage and minac is 4pp every 3 mlgs. The copy requirement is 25, and there are 15 members. The apa was founded by Mike Flynn, Harry Broertjes and Richard Morrissey in May 1976. The Leader is Richard Morrissey, 55 Claudette Circle, Framingham, MA 01701. The first mlg was 26pp. The history, potential and passage of time of the Legion have been discussed. Several members offer inexpensive ditto, mimeo and offset printing to other members. A sample mlg is \$.50, or 1¢ per page rounded up to the nearest nickel, whichever is higher. (Gino Membrino, Richard Morrissey)

The Libertarian Connection is a hexaweekly libertarian apa with deadlines set by the OE. Dues are in the form of subscriptions: \$5.85 for 200pp, \$10.10 for 360pp, add \$1.50 and \$2.50 respectively if outside the U.S., Canada and Mexico; payable to "Lisa Dawn". There is no minac, and members are allowed to do up to 2 free 8½x11 pages per mlg, extra pages are \$1@. Material must be black and white, with at least a ½" margin around the edges. There are presently several hundred members. This apa was founded by Lisa Dawn. The OE is Lisa Dawn, PO Box 90913, Worldway Postal Center, Los Angeles, CA 90009. Mlgs average 60pp. The OE does all printin, half-size by offset. Non-libertarian material is generally razzed by other contributors, so it is advised that you either be libertarian, become libertarian or not bother joining. (Erwin S. Strauss)

MUSAPA (the MUSic APA) will be a quarterly classical and other serious non-rock music apa. Deadlines will be set as soon as there are enough members to start. Dues are \$1 at a time and minac is 2pp every mlg. The copy requirement and membership limit are both 20, and there are 3 prospective members. This apa will hopefully be founded by Denny Bowden sometime this year. The OE is Denny Bowden, 917 Tracy St., Daytona Beach, FL 32017, and he can do dittoing at \$.25 per page. (Denny Bowden)

Necronomicon APA (refers to the book invented in the weirdfiction of H. P. Lovecraft) is a new quarterly HPL studies apa with deadlines on Mar. 15, June 15, etc. Dues are \$2 per year and minac is 4pp of original scholarly writing every mlg; 1p of art from artist members every mlg. The copy requirement is 25. There is no membership limit, and there are 9 members. This apa was founded by R. Alain Everts in April 1976. The OE is R. Alain Everts, PO Box 864, Madison, WI 53701. The first mlg had 122pp. Subjects include Lovecraft's writing, Derleth's misunderstanding of HPL's canon, etc. The OE will do offset printing at cost. Mlgs are available to members only. (Don Herron)

PAAPA\*(the Pop Art APA) is a hexaweekly popular arts apa with deadlines appointed by the OE. Dues are \$2 per year and minac is 1 contribution every 2 mlgs, with a copy requirement of 25. The membership limit is 20; the apa is semi-invitational. There are 12 members. This apa was founded by Joe Moudry on July 12, 1974. The OE is Joe Moudry, Box 1205, Tuscaloosa, AL 35401. (Joe Moudry)

PHAPA (the Pulp Heroes APA) is a new quarterly pulps apa with deadlines on the last mail day of Feb., May, etc. Dues are \$1 initially, then assessed as needed. Minac is 4pp every 2 mlgs, and the copy requirement is 20. but it may go up after the Aug. mlg. There is no membership limit; but apazines must deal with pulp heroes or directly related matters. There are 11 members. This apa was founded by Lester Boutillier in Feb. 1976, based on a suggestion by Brian Earl Brown. The OE is Lester Boutillier, 2726 Castiglione St., New Orleans, LA 70119. The first two mlgs averaged 27pp. No printing is available. A sample mlg is \$.50. (Lester Boutillier)

Phoenix\*("rising from the ashes") is a bi-monthly creative apa with deadlines on the 2nd Friday in Jan., Mar., etc. Dues are \$2 and minac is 4pp every 2 mlgs with a copy requirement of 40. The membership limit is 30, and there are 24 members. This apa was



founded by Dierdre Matthews and John Norman in May 1975. The CM is Dierdre Matthews, PO Box 364, Kalamazoo, MI 49005. The CM can do mimeo; check with her first. A sample mlg is \$1.50. This apa was an off-shoot of Argos, and most of the present membership are non-fen from various Southern Michigan universities. (Dave Hulan)

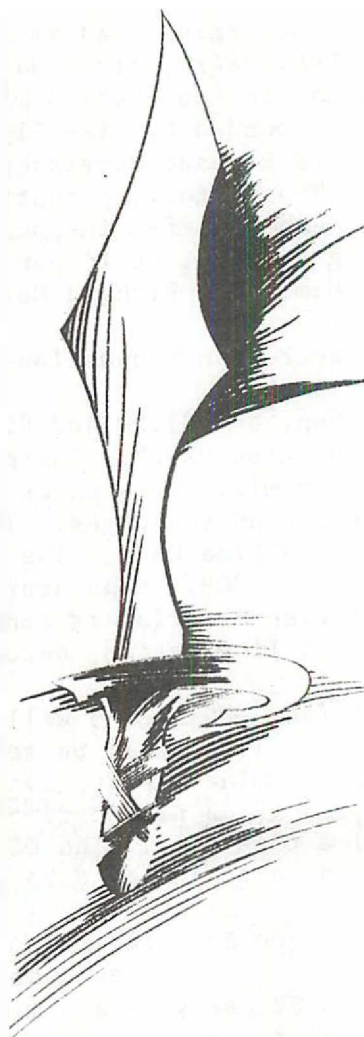
REHUPA (the Robert E. Howard United Press Association) is a bi-monthly REH/Sword & Sorcery apa with deadlines on Jan. 1, Mar. 1, etc. Dues are \$3 per year and minac is 2pp every 2 mlg, with a copy requirement of 50. The membership limit is 36, and there are 19 members. This apa was founded by Tim C. Marion in November 1972. The OE is Jonathan Bacon, Box 147, Lamoni, IA 50140. Mlgs have been growing; the last one was 70pp. Subjects discussed include S&S, REH, and comics as they relate to the above. The OE will print 80 copies of a zine at \$2.30 per 2 sides plus \$.50 per zine to mail the extra 30 copies back to the member. The OE will generally send a sample mlg to persons interested in joining. (Jonathan Bacon)

SF/O APA (Science Fiction/Occult APA) is a new bi-monthly sercon sf/occult apa with deadlines on the last day of Feb., Apr., etc. Dues are \$1 per year and minac is 4pp every mlg with a copy requirement of 20. The membership limit is 25 and there are 20 members. This apa was founded by James T. Crawford in 1976. The OE is James T. Crawford, 4688 Marburg #3, Cincinnati, OH 45209. Mlgs are around 40pp. Subjects to be discussed include: SF in TV, comics, pulps and other mass media; occult, including ghosts, Atlantis, Bermuda Triangle and related areas, also as covered by mass media. After Aug., the OE will offer printing; check with him for details. Also check with him if you want a sample mlg. (James T. Crawford)

The Tholian Web\*(named for an episode of STAR TREK) is a creative STAR TREK apa. The OE is Sylvia Stanczyk, 1902F #3 Buffalo Rd., Erie, PA 16510. Again, this listing will not appear next time unless I have lots of new information. (Steve Beatty)

UNAPA\*(the Unicorn APA) is an SCA apa. The OP (Official Person) is John McFadden, 630 Lander, Apt. C., Reno, NV 89502. Yet another apa I need more information to prevent it from dropping off my list. (Andrea Mitchell, Larry Nielson)

A Women's Apa is the temporary name of a new quarterly women's apa with the first issue to be out around the end of Sept. Dues are \$2 at a time for postage and minac is 6pp every 2 mlg, with a copy requirement of 10 more than the membership. The membership limit has not yet been decided, and the OEs are also unsure as to whether the apa will be restricted to women only. They will decide this after discussion with prospective members. This apa will be formally founded by Janet Small and Victoria Wayne later in the year. The apa is based on an idea by Susan Wood. The OEs are Victoria Wayne and Janet Small, % PO Box 156 - Sta. D, Toronto, Ontario M6P 3J8 CANADA. The OEs can run off Gestetner stencils and even do electrostencilling at cost, but as materials in the Toronto area are about the highest around, members are urged to do their own repro. Ask the OEs about sample mlg. (Steve Beatty, Janet Small)



## *Last Minute News*

As usual, Steve Beatty seems to hear about every apa in creation before anyone else. In addition to telling me that Hapa, Ask Not and A Women's Apa existed, he has just told me of INNER CIRCLE, edited by Walter Shedlofsky, Box 553, St. Louis, MO 63188. It sounded

to him as if it was an sf poetry apa. On the copy of the Hugu Awards ballot he sent me with the above information, there were 2 hoax apas I knew nothing about: MarApa and Claap. More information will be appreciated. Steve's Fanzine Directory (mentioned last issue) is finally on stencil and waiting for the paper to arrive so he can print the 54 page zine.

As is standard procedure with most first issues (or so I am given to understand), things did not go as planned. I had decided I wanted to have a 16pp offset zine with front and back covers, mailed flat in an envelope via Third Class. To do this I would have to rent an elite typewriter (otherwise this zine would have been 20pp and prohibitively expensive), use my pre-printed return address stickers, and pray that the whole thing would weigh under 2 ounces. After typing 15pp (and running out of material), I realized that to put the zine in an envelope would result in doubled postage costs plus the cost of an envelope and a hand-stamp (I was totally unable to find those pre-printed stickers, all 980 of them), not to mention the cost of the back cover). Following a great deal of agonizing, I decided to redo page 15 (that's what I'm doing now, and it's the only reason this and the next two paragraphs are appearing at all) and move the "You got this issue because..." to the new page 16 along with a pre-printed return address and instructions for the PO.

Next issue I have two tentative plans. The first one calls for a format much like this one, only on stencil, and it will be run off on either a school mimeo or on Frank Balazs' mimeo (thanks for the offer, Frank). The second, which I am getting more and more fond of as time goes on, will be done using the school newspaper's compositor to produce justified double column pages. Using 10 point type, I will be able to fit probably twice as much copy per page, and as it will be offset, I will be able to experiment with various page sizes and formats. If it works, SotM 15 and 16 will also use the same format as SotM 14.

I'm glad I have the space to thank two people without whom this issue would have been harder, more frustrating and not as nice to do. My friends Nicholas J. Polak, who gave me advice over the phone and patiently helped me over the many stumbling blocks, both real and imagined, and Shelly Kellman, who taught me how to use transfer lettering, and helped me copy-edit, paste-up and proofread the finished copy. And, before I forget, the 44 people who sent me the meat of this zine's apa information. SotM 13 is that much better because of your time and effort. I thank you all.

## *APA Appearances*

AfricAPA.....3	Argos.....11	HerbAPA.....12	PHAPA.....13
Alarums and	AZAPA.....9	The Hyperborean	Phoenix.....13-14
Excursions....10	Canadapa.....5	League.....12-13	RAPS.....6
ANZAPA.....4	CAPA-alpha.....11	I-SAPA.....5-6	REHUPA.....14
APA-5.....10	CAPRA.....11	LEAPA.....3&13	The Resuscitated
APA-45.....4	CarbAPA....3, 11-12	The Libertarian	Big Apa.....6
APA-50.....5	The Cult.....5	Connection....13	ROMPA.....7
APA-H.....10	D'APA.....9	Malamrum.....6	SAPS (U.S.).....7
APA-L.....8	D'APA-em.....12	Minneapa.....9	SAPS (Aus.).....10
APALON.....10	DraculAPA.....12	MISHAP.....9	SDNY.....10
APAlloosa.....8	Elanor.....5	MUSAPA.....3&13	SF/O APA.....3&14
APA-LP....3, 10-11	E*O*D.....12	Myriad.....6	SFPA.....7
Apanage.....11	FAPA.....5	N'APA.....6	SLANAPA.....7
APA-NESFA.....8	Frefanzine.....12	Necronomicon	TAPS.....7
APA-nova.....8	George.....3	APA.....13	Tetragrammaton
APA-nu.....8	The Galactic	NYAPA.....6	Fragments.....7
APA-pi.....8	Lens.....3	OMPA.....6	The Tholian Web..14
Apa-Q.....9	GUAPO.....9	PAAPA.....13	UNAPA.....14
APPLE.....3&11	Hapa, Ask Not..3&12	PAPS (PAPA?).....3	A Women's Apa....14

## *You got this issue because..*

- ( ) You're a member of Apanage and/or RAPS.
- ( ) You're a member of an apa this is going through. If you want to continue receiving this zine, see the colophon for further instructions.
- ( ) We trade.
- ( ) You are a subscriber. \_\_\_\_\_ will be your last issue.
- ( ) You're a friend (but you can still do something if you want).
- ( ) You're anapa editor. Keep/Start sending information.
- ( ) You have given and will continue to give apa information (right?)!
- ( ) You were on Tim's mailing list. To receive the next issue, I must have some kind of response before then (consult the colophon).
- ( ) I owe you a letter. ( ) You owe me a letter. ( ) We owe each other letters!
- ( ) I'd love it if you did artwork!
- (✓) You're an apa editor and didn't send the requested information. This is your last issue unless I receive full information from you.
- ( ) You have done something not mentioned above. I will mention it below.

Note: If you have managed to receive more than one copy of this zine, please pass the the extra(s) on to someone you think will be interested. Thank you.

South of the Moon 13  
 % Andrew Sigel  
 424 Greenleaf St.  
 Evanston, IL 60202



TO:

Elst Weinstein  
 APDO 6-869  
 Guadalajara 6, Jalisco  
 MEXICO

**FIRST**

STANDARD CLASS MAIL

**FIRST**

STANDARD CLASS MAIL

PRINTED MATTER

FORWARDING AND RETURN POSTAGE GUARANTEED

ADDRESS CORRECTION REQUESTED